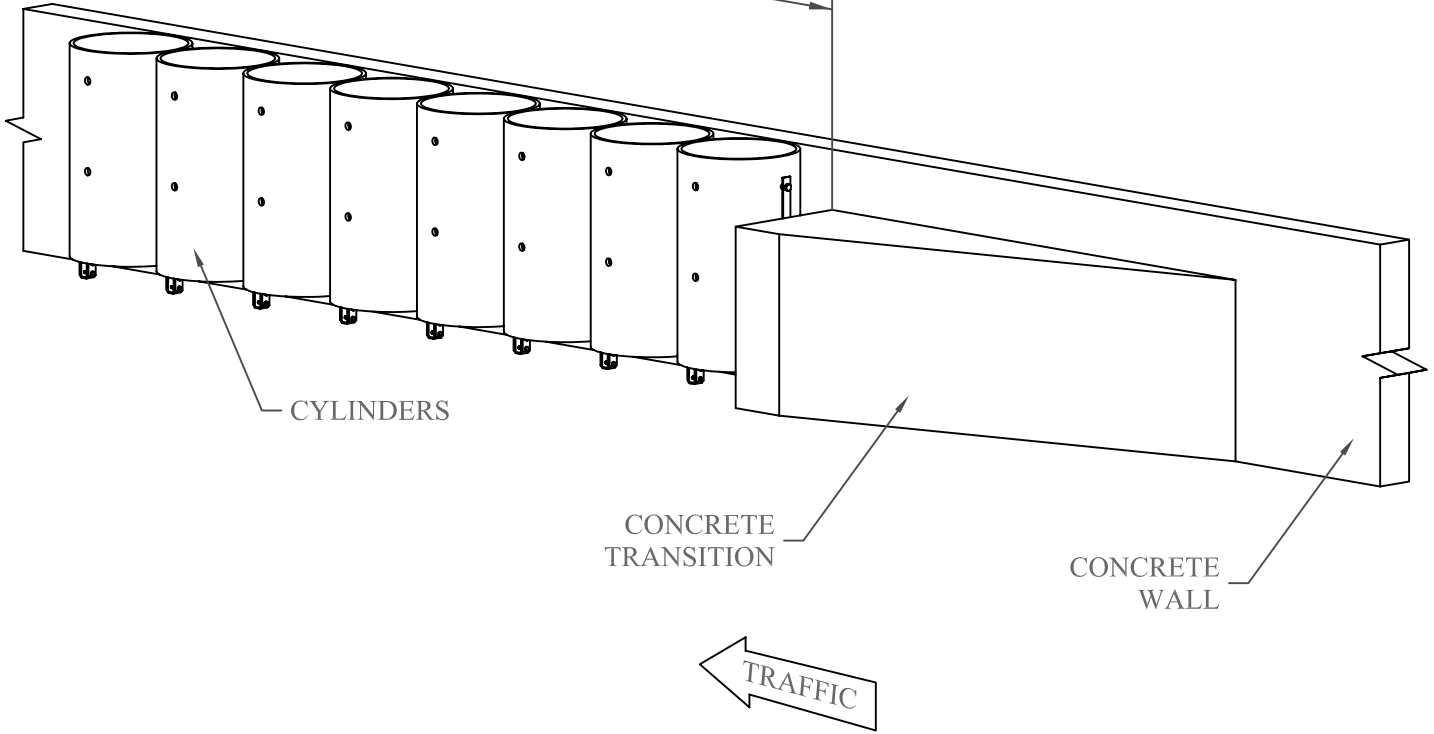
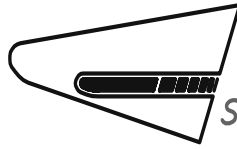


LENGTH VARIES TO ACCOMODATE SITE



# CUSHIONWALL<sup>®</sup> II



**ENERGY ABSORPTION  
SYSTEMS, INC.**

## SCI14

SHEET NO.	DATE:
1 of 2	4/19/05

## INTENDED USE

The CushionWall® II is a self-restoring and highly reusable energy absorbing longitudinal barrier especially suited for use in redirecting errant vehicles in high frequency lateral impact areas, such as severe highway curves.

The CushionWall® II safely dissipates the collision energy of impacting vehicles weighing up to 4,410 lb [2000 kg], traveling at speeds up to 43.5 mph [70 km/h] and impact angles as high as 25 degrees.

During an impact, a row of HDPE cylinders are compressed as the force of the impacting vehicle is applied to the side of the CushionWall II.

The CushionWall® II installation consists of galvanized steel support hardware and energy absorbing cylinders. The cylinders and hardware are assembled and attached to an existing reinforced concrete wall. The number of cylinders comprising a complete system depends on the actual site configuration.

The CushionWall® II, after some impacts, will restore itself to its pre-impact shape and retain its basic integrity. Maintenance and repair, as well as debris on the roadway, are minimized.

Depth = 24" [610 mm]  
Length = Length of hazard

Height = 36" [914 mm]

## Contact Information

**Corporate Offices:**  
**35 East Wacker Dr., 11th Floor**  
**Chicago, IL 60601-2076**  
**Telephone: (312) 467-6750**  
**FAX: (312) 467-1356**  
**<http://www.energyabsorption.com/>**

## CUSHIONWALL® II

**#SCI14**

SHEET NO.	DATE
2 of 2	4/19/05

